



# SINGLE FAMILY **MODULAR CONSTRUCTION**

MODEL MW\_4.2.1

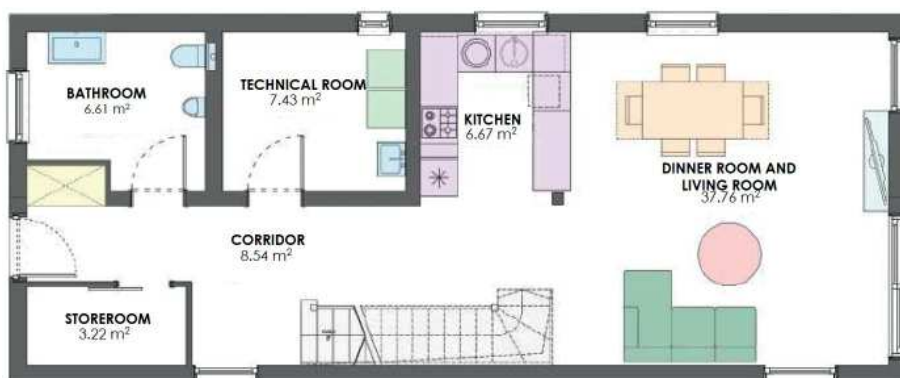


MW TECHNIC

[www.mwtechnic.pl](http://www.mwtechnic.pl)

## General Parameters

		DEVELOPER STANDARD	TURNKEY STANDARD
Load-bearing structure	Steel profiles protected against corrosion	●	●
Outer wall	Frame structure based on an airtight composite filled with mineral wool and additionally insulated with a layer of polystyrene foam; $U \leq 0,20$ , 27 cm thick	●	●
Windows	Triple-pane with five chambers, PVC, $U \leq 0,90$ , Eurocolor, Siegenia fittings; HS-type terrace window	●	●
Outside windowsills	Steel, anthracite-coloured, corrosion-protected sheet metal	●	●
Inside windowsills	PVC (optionally MDF or conglomerate)		●
Outside door	Solid steel with insulated door frame and threshold, with handrail and peephole, $U \leq 1,0$ , antiburglary class RC2, Wikęd	●	●
Inside door	Wood-based with CPL veneer, Westag&Getalit		●
Inside stairs	Openwork stairs with handrail and railing in varnished beech wood	●	●
Facade	White mineral plaster with anthracite inserts, wood cladding board elements and imitation of facade cladding stone	●	●
Roof	Gable roof covered with steel roofing tiles (optionally with cement tiles)	●	●
Heat source	Gas condensing boiler (optionally heat pump)	●	●
Heating	Underfloor low-parameter in drywall and two electric bathroom radiators	●	●
Ventilation	Mechanical with recuperation, air supply exhaust system, Komfovent	●	●
Fixtures and sanitary facilities	Flush-mounted systems, TECE	●	●
	Toilet flush buttons, TECE; Full sanitary facilities, KOLO, GEBERIT group; bathroom fixtures, Ideal Standard		●
Electrical installation	Distribution box in the technical room, complete flush-mounted wiring, electrical boxes	●	●
Electrical equipment	Complete electrical equipment in line with the design - electrical sockets, RJ45 sockets, RTV sockets		●
Internal walls finishing	Smoothed and painted, partly with glass fibre non-woven-fabric wallpaper; wall tiles in the bathrooms, Paradyż		●
Internal floors finishing	Floor tiles, Paradyż; floor panels with abrasion class $\geq AC4$ , Swiss Krono		●



### Ground floor view

Area **70,23 m<sup>2</sup>**

### Floor view

Area **63,27 m<sup>2</sup>**  
 Floor area **51,46 m<sup>2</sup>**



## Room finishing in the turnkey standard

ROOM CARDS							
	NAME OF THE ROOM	FINISHING				INSTALLATIONS	
		FLOOR	WALL	CEILING	DOOR WOODWORK	SANITARY	ELECTRICAL
<b>GROUND FLOOR</b>	Hallway	tiles 60x60 cm	wallpaper + painting	wallpaper + painting	outside door, anthracite, 90x200		3x lighting outlet 2x electrical socket 1x RJ45 socket
	Bathroom	tiles 60x60 cm	wall with sanitary facilities – tiles 30x60cm up to the height of 1.20m; above and the other walls wallpaper + painting	wallpaper + painting	rebated door, CPL, white	washbasin with tap, urinal with lid, toilet	floor heating control 2x lighting outlet 1x electrical socket 1x electrical socket (2)
	Storeroom	tiles 60x60 cm	wallpaper + painting	wallpaper + painting	sliding door, CPL, white		1x lighting outlet 1x electrical socket
	Technical room	tiles 30x30 cm	painting	painting	rebated door, CPL, white	access to washing machine and dryer, 1x floor drain	1x lighting outlet 3x electrical socket 1x electrical socket (3)
	Kitchen	tiles 59,8x59,8 cm	painting	wallpaper + painting		access to sink, dishwasher and fridge	floor heating control 2x lighting outlet 1x electrical socket 2x electrical socket (2)
	Dining room	tiles 59,8x59,8 cm	Tapete + Anstrich	wallpaper + painting			1x lighting outlet 1x electrical socket
	Living room	panels	wallpaper + painting	wallpaper + painting			floor heating control 2x lighting outlet; 2x electrical socket (2); 1x RTV socket

ROOM CARDS							
	NAME OF THE ROOM	FINISHING				INSTALLATIONS	
		FLOOR	WALL	CEILING	DOOR WOODWORK	SANITARY	ELECTRICAL
<b>FLOOR</b>	Hallway	panels	wallpaper + painting	wallpaper + painting			2x lighting outlet 2x electrical socket 1x RJ45 socket
	Bathroom	tiles 60x60 cm	tiles 30x60cm up to 2.10m or 1.20m; above that, painting with water-proof paint	wallpaper + painting with water-proof paint	rebated door, CPL, white	shower cabin with shower tray and mixer tap, bathtub with mixer tap, two washbasins with mixer tap, toilet	floor heating control 2x lighting outlet 1x electrical socket 1x electrical socket (2)
	Storeroom	panels	wallpaper + painting	wallpaper + painting	rebated door, CPL, white		1x lighting outlet 1x electrical socket
	Bedroom 1	panels	wallpaper + painting	wallpaper + painting	rebated door, CPL, white		floor heating control 2x lighting outlet 1x electrical socket 3x electrical socket (2) 1x RTV socket
	Bedroom 2	panels	wallpaper + painting	wallpaper + painting	rebated door, CPL, white		floor heating control 1x lighting outlet 1x electrical socket 2x electrical socket (2)
	Bedroom 3	panels	wallpaper + painting	wallpaper + painting	rebated door, CPL, white		floor heating control 1x lighting outlet 1x electrical socket 2x electrical socket (2)

## Price list



### • Turnkey house\*

**individual pricing**

\* The price includes:

- Turnkey finishing of the modules in line with the company standard
- Transport of the modules up to 200 km from the Production Facility in Ostrowiec Świętokrzyski
- Construction of the foundations – reinforced concrete spot footings (assuming good ground conditions)
- Assembly of modules on the Customer's plot

The price does not include:

- Connecting the utilities (water, electricity, sanitary and storm water drainage, gas, telephone, optical fibre, as required)
- Landscaping of the area around the building

### • Developer house

**individual pricing**

The presented price offer is for information purposes only and does not constitute an offer within the meaning of Art. 66 (1) of the Civil Code and other relevant legal provisions.

**ENERGY EFFICIENCY**  
Annual non-renewable primary energy demand  $\leq 70$  kWh/m<sup>2</sup>.

**FAST EXECUTION**  
3 months from signing the contract.

**MOBILITY**  
Possibility to move the house to another location.

**ECOLOGY AND HEALTH**  
Mechanical ventilation with recuperation and a set of dust and anti-allergy filters.

**DURABILITY**  
Steel load-bearing corrosion-resistant structure.

**GUARANTEE**  
30 years for the structure.

## Contact us

Modular construction salesperson –  
single-family houses  
tel. +48 519 687 479  
dom@mwtechnic.pl

MW TECHNIC  
Bodycha 73A,  
05-816 Reguły  
kontakt@mwtechnic.de  
www.mwtechnic.de



MW TECHNIC